

Section 12 Lead Sheet Symbols

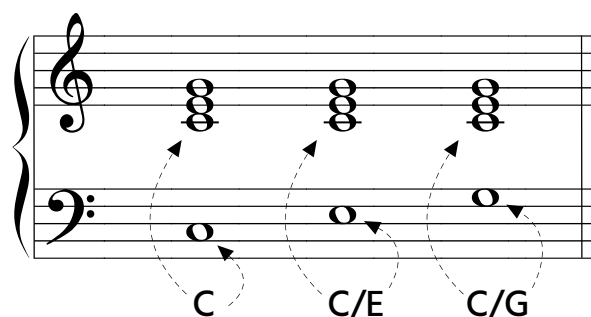
In some modern styles of music, such as jazz, different symbols are used to identify chords. These symbols are sometimes referred to as **lead sheet** symbols. This term does not refer to one system; the lead sheet symbols used in jazz will differ from the symbols used in other popular styles. Even jazz composers differ from one another on the types of symbols used.

A **major chord** that has its root as the lowest note (root position) is represented by a capital letter. If the 3rd or 5th of the chord is the lowest note, this is indicated by a slash followed by another capital letter that names the 3rd or 5th of the chord.

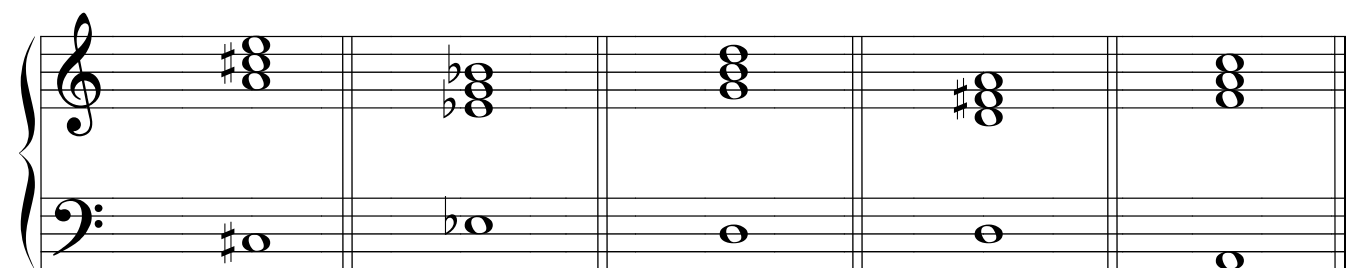
C = C Major chord; C (the root) is the lowest note.

C/E = C Major chord; E (the 3rd) is the lowest note.

C/G = C Major chord; G (the 5th) is the lowest note.



① Write the lead sheet symbol for each chord.



A/C# _____

