

# Primo Theory

## *The Spiral Series*

---

### Level 2

---

#### Contents

Assignment 1		<i>page</i> 2
Assignment 2		4
Assignment 3		6
Assignment 4		8
Assignment 5		10
Assignment 6		12
Assignment 7		14
Assignment 8		16
APPENDIX I	<i>Ear-Training Assignments</i>	18
APPENDIX II	<i>Study Materials</i>	23
APPENDIX III	<i>Drawing Notes and Rests</i>	27

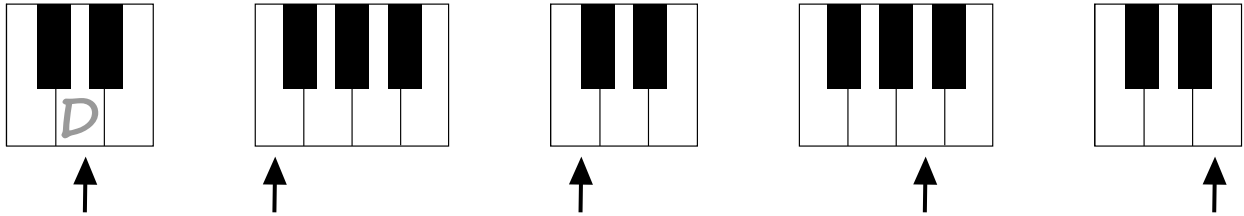
# Assignment 1

① Fill in the missing letters to complete the music alphabet.

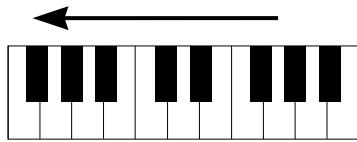
A B \_\_\_\_ D \_\_\_\_ F G

② How many letters are there in the music alphabet? \_\_\_\_

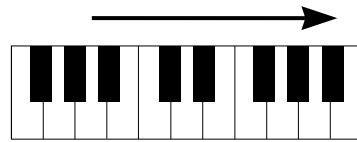
③ Name the keys above the arrows. Write the letter names on the keyboard.



④ In each illustration the arrow is pointing up or down. Circle the correct answer.



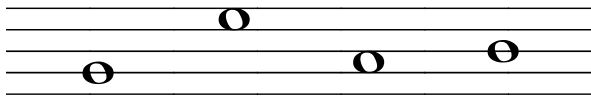
UP or DOWN



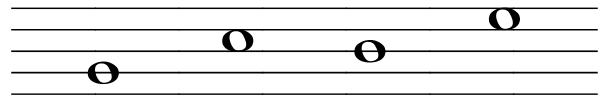
UP or DOWN

⑤ A staff has (how many) \_\_\_\_ lines and \_\_\_\_ spaces.

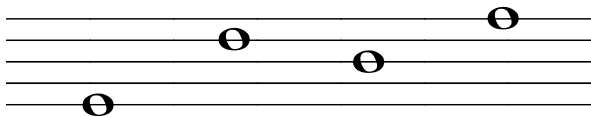
⑥ Circle all the **LINE** notes.



Circle all the **SPACE** notes.

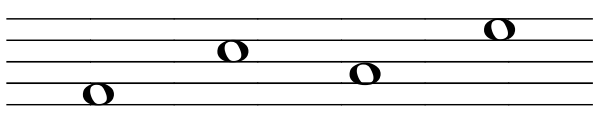


⑦ Write the **LINE** number for each note.



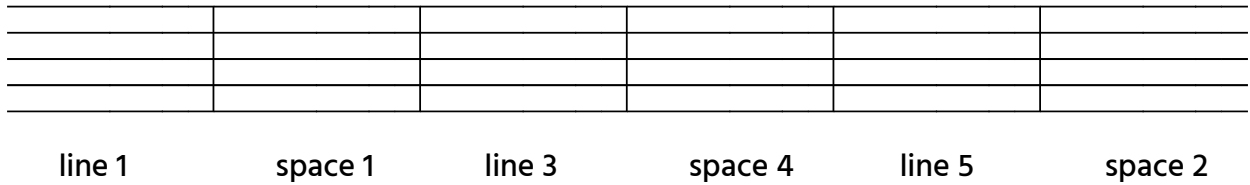
\_\_\_\_\_

Write the **SPACE** number for each note.

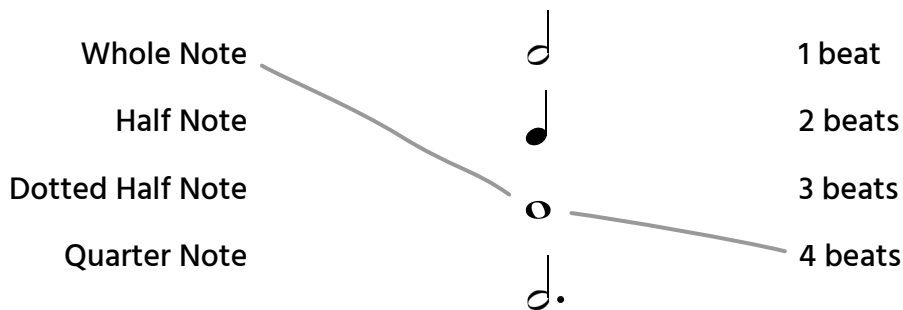


\_\_\_\_\_

- ⑧ Draw a whole note on the correct line or space



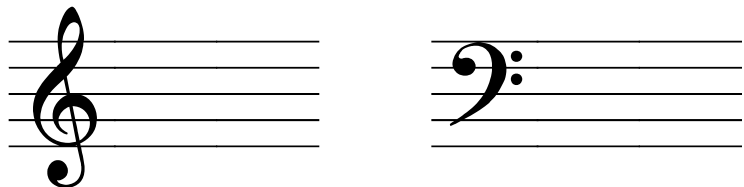
- ⑨ Draw a line connecting the correct symbol for each term.  
Draw a line connecting the correct number of beats each note gets.



- ⑩ Some of the stems are placed on the wrong side of the note head.  
Draw an **X** across the notes with incorrect stem placement.



- ⑪ Draw a **Middle C** for each clef.  
Use whole notes.



## Ear-Training

- ⑫ Go to **APPENDIX I**, Assignment 1 (p.18) and complete the ear-training assignment.  
To access the web applications, go to:  
PrimoTheory.com → Spiral Series → Level 2 → Assignment 1

Or scan the QR code with a mobile device to go directly to the assignment page:

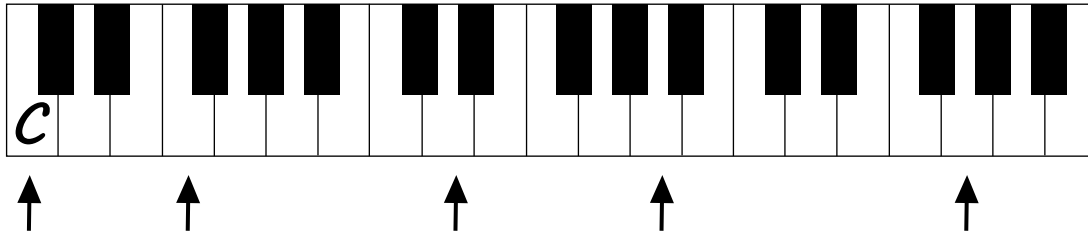


## Assignment 2

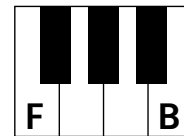
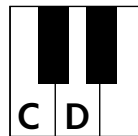
- ① The music alphabet is going up two times. Fill in the missing letters.

**A B** \_\_\_\_\_ **E F G** \_\_\_\_\_ **B** \_\_\_\_\_ **D E** \_\_\_\_\_ **G**

- ② Name the keys above the arrows. Write the letter names on the keyboard.



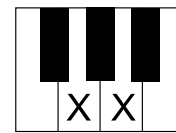
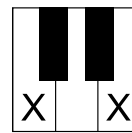
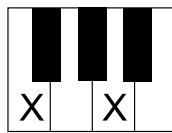
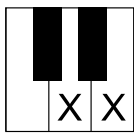
- ③ Two keys are named in each group. Circle the **higher** key of each pair.



- ④ Two keys are named in each group. Circle the **lower** key of each pair.



- ⑤ Are the keys marked a step or skip apart? Circle the correct answer.



**Step**  
or  
**Skip**

**Step**  
or  
**Skip**

**Step**  
or  
**Skip**

**Step**  
or  
**Skip**

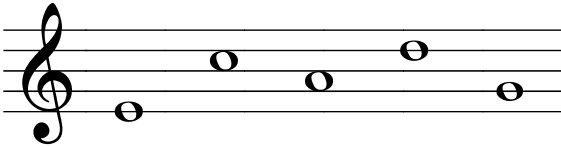
- ⑥ The term "**Step**" means the same thing as a (circle one) **2nd** **3rd** **4th** **5th**

The term "**Skip**" means the same thing as a (circle one) **2nd** **3rd** **4th** **5th**

- ⑦ Add a stem to each note head.



- ⑧ Name the notes.



\_\_\_\_\_



\_\_\_\_\_

- ⑨ Write the number of beats per measure according to each time signature.


$\frac{4}{4}$

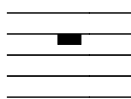
$\frac{3}{4}$


$\frac{2}{4}$

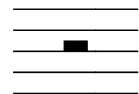
Beats per measure: \_\_\_\_\_


- ⑩ Write the number of beats each note or rest gets in  $\frac{4}{4}$  time.

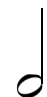
 gets \_\_\_\_\_ beat(s).

 gets \_\_\_\_\_ beat(s).

 gets \_\_\_\_\_ beat(s).

 gets \_\_\_\_\_ beat(s).

 gets \_\_\_\_\_ beat(s).

 gets \_\_\_\_\_ beat(s).

## Ear-Training

- ⑪ Go to **APPENDIX I**, Assignment 2 (p.19) and complete the ear-training assignment.

To access the web applications, go to:

PrimoTheory.com → Spiral Series → Level 2 → Assignment 2

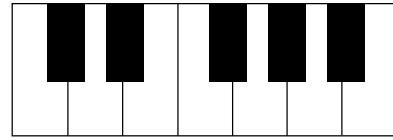
Or scan the QR code with a mobile device to go directly to the assignment page:



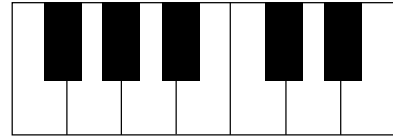
# Assignment 3

① Label the keys that match the three letters given.

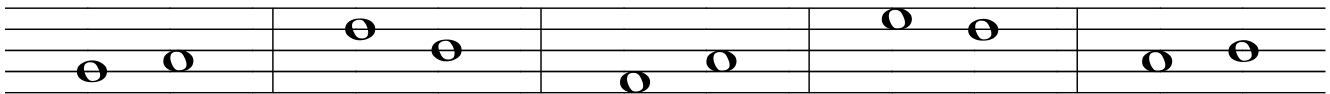
D F A



C G D



② Each pair of notes is a 2nd (step) or 3rd (skip) apart. Circle the correct answer.



2nd  
or  
3rd

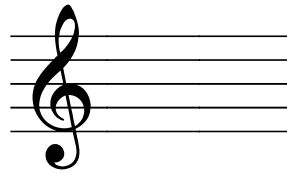
2nd  
or  
3rd

2nd  
or  
3rd

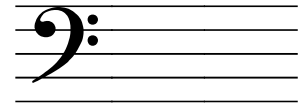
2nd  
or  
3rd

2nd  
or  
3rd

③ Draw the note indicated for each clef. Use whole notes.

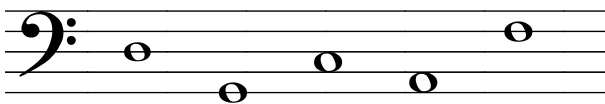


Treble G

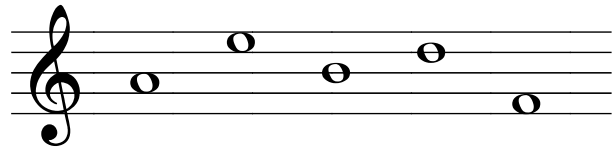


Bass F

④ Name the notes.



\_\_\_\_\_

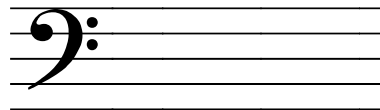


\_\_\_\_\_



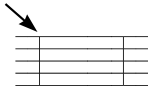
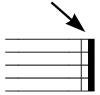




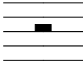
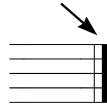
⑤ Add **stems** and **dots** to each note head.



- ⑥ Draw the notes named in each measure. Use any line or space.

		
Whole Note	Half Note	Quarter Note

- ⑦ Circle the correct symbol for each term.

<p>Flat      <math>\flat</math>   <math>\sharp</math></p> <p>Treble Clef         </p> <p>Piano      <i>f</i>   <i>p</i></p> <p>Bar Line      <math>\frac{4}{4}</math>   </p> <p>Double Bar Line         </p>	<p>Forte      <i>f</i>   <i>p</i></p> <p>Bass Clef         </p> <p>Sharp      <math>\flat</math>   <math>\sharp</math></p> <p>Time Signature      <math>\frac{3}{4}</math>   </p> <p>Whole Rest         </p>
--	--

- ⑧ Add bar lines where they are needed. Check the time signatures.



## Ear-Training

- ⑨ Go to **APPENDIX I**, Assignment 3 (p.19) and complete the ear-training assignment.

To access the web applications, go to:

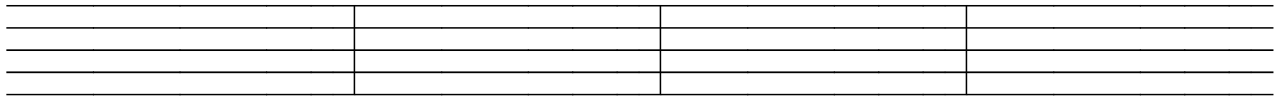
PrimoTheory.com → Spiral Series → Level 2 → Assignment 3

Or scan the QR code with a mobile device to go directly to the assignment page:



## Assignment 4

- ① Draw the notes as described.



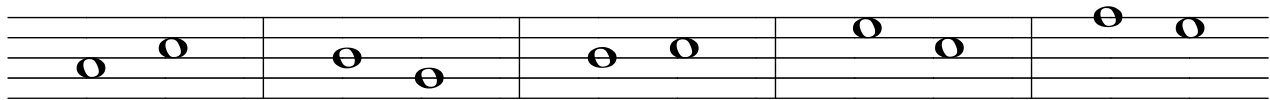
line 1  
whole note

space 1  
half note

line 4  
quarter note

space 3  
dotted half note

- ② Each pair of notes is a 2nd (step) or 3rd (skip) apart.  
Circle the correct answer.



2nd  
or  
3rd

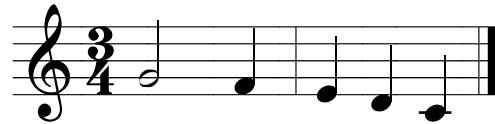
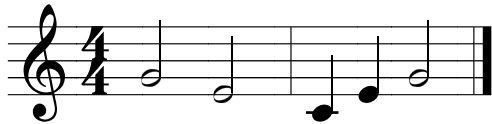
2nd  
or  
3rd

2nd  
or  
3rd

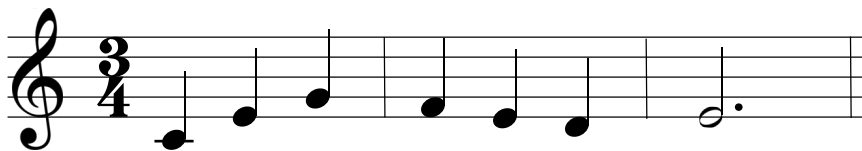
2nd  
or  
3rd

2nd  
or  
3rd

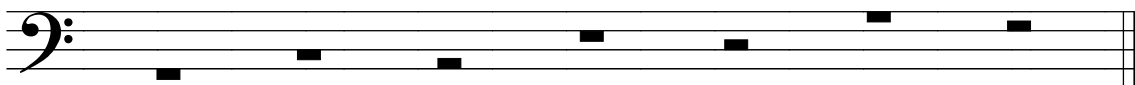
- ③ Circle the musical example that moves by **2nds**. Draw a  around each **Treble G**.



- ④ Draw a circle around the group of notes that form the following pattern:  
**Up a 3rd, then down a 2nd.**

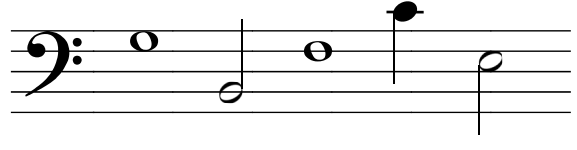


- ⑤ Find the correctly placed **whole rest** and circle it.





- ⑥ Name the notes. Circle the **Bass F**.



\_\_\_\_\_

\_\_\_\_\_

- ⑦ Draw a line connecting each group of notes and rests to the correct time signature.

	$\frac{3}{4}$	
	$\frac{4}{4}$	
	$\frac{2}{4}$	

- ⑧ Add bar lines where they are needed. Check the time signature.



- ⑨ Write the counts of each measure under the notes and rests.



- ⑩ Draw a around the **Sharp Sign**.

Draw a around the **Flat Sign**.

$\frac{3}{4}$

$b$

*p*

$\text{bass clef}$

$\sharp$

*f*

## Ear-Training

- ⑪ Go to **APPENDIX I**, Assignment 4 (p.20) and complete the ear-training assignment.

To access the web applications, go to:

PrimoTheory.com → Spiral Series → Level 2 → Assignment 4

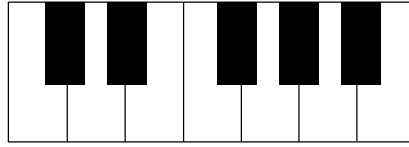
Or scan the QR code with a mobile device to go directly to the assignment page:



# Assignment 5

① Use the letters given to label the keys.

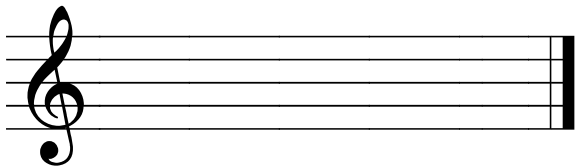
**C G D A E**



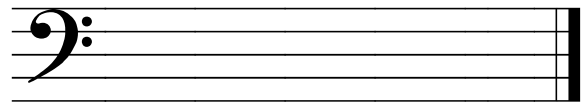
② Write the letters of the music alphabet going up two times. Some letters are given.

**A** \_\_\_\_\_ **B** \_\_\_\_\_

③ Draw the notes named. Use whole notes.

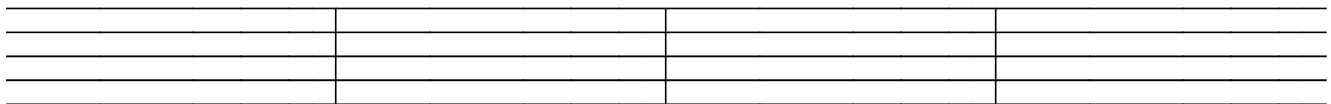


**F B E C**



**G D A E**

④ Draw the notes as described.



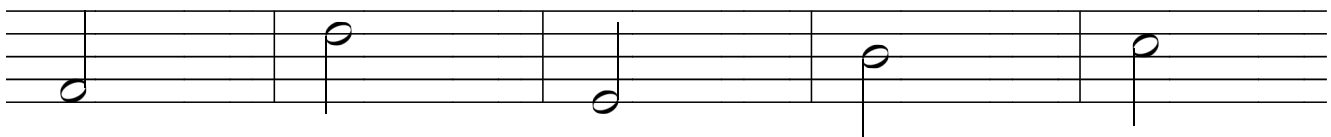
line 4  
**whole note**

space 1  
**half note**

line 2  
**quarter note**

space 4  
**dotted half note**

⑤ From each half note, draw another half note according to the description. Example:



**UP** a 3rd

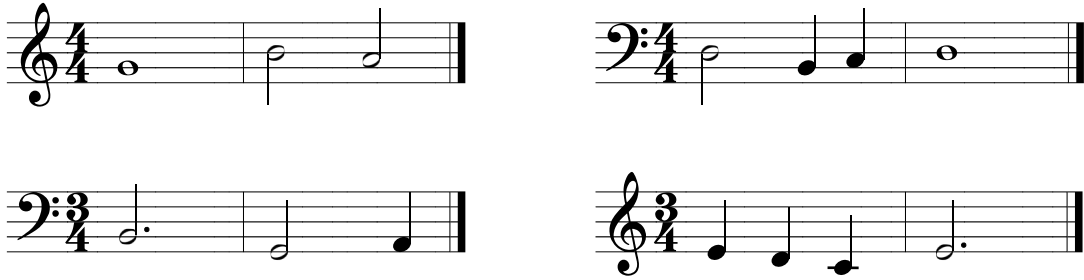
**DOWN** a 2nd

**UP** a 2nd

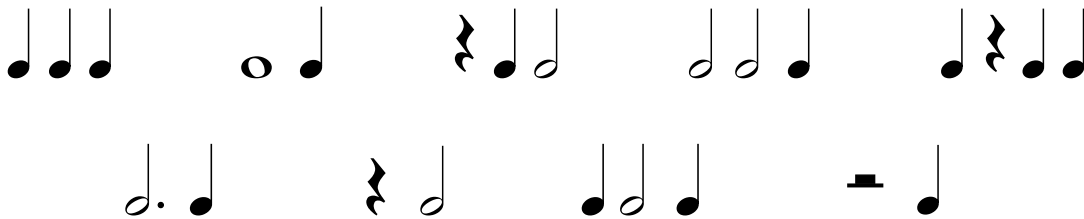
**DOWN** a 3rd

**UP** a 3rd

- ⑥ Circle the musical examples which contain the following sequence:  
**DOWN a 3rd, UP a 2nd.**



- ⑦ Circle each group of notes and rests that add up to **four counts** in  $\frac{4}{4}$  time.



- ⑧ **Add bar lines** where they are needed. Check the time signature.



- ⑨ Write the counts of each measure under the notes and rests.



## Ear-Training

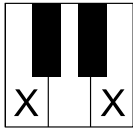
- ⑩ Go to **APPENDIX I**, Assignment 5 (p.20) and complete the ear-training assignment.  
 To access the web applications, go to:  
 PrimoTheory.com → Spiral Series → Level 2 → Assignment 5

Or scan the QR code with a mobile device to go directly to the assignment page:

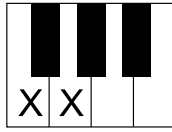


## Assignment 6

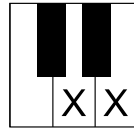
① The keys marked with an **X** are a 2nd (step) or 3rd (skip) apart. Circle the correct answer.



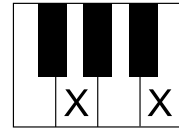
2nd or 3rd



2nd or 3rd

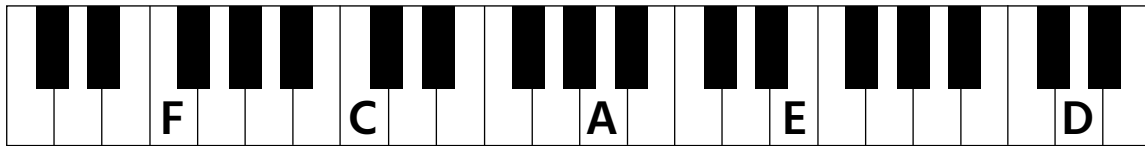


2nd or 3rd

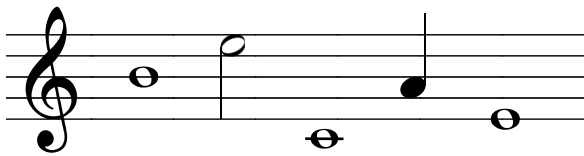


2nd or 3rd

② Identify the key that is a 3rd below each named key. Write the letter names on the keyboard.



③ Name the notes.

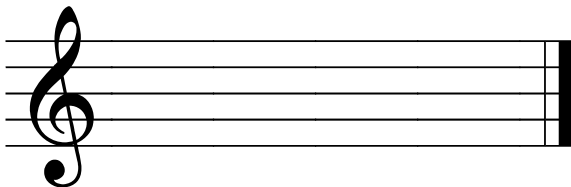


\_\_\_\_\_

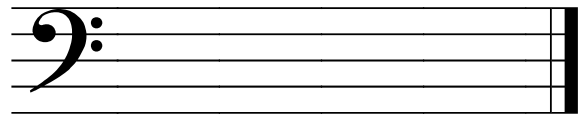


\_\_\_\_\_

④ Use **half notes** to draw the notes named.

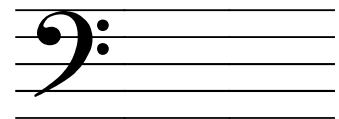
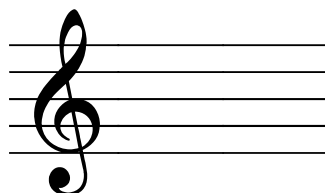


**G C F A**

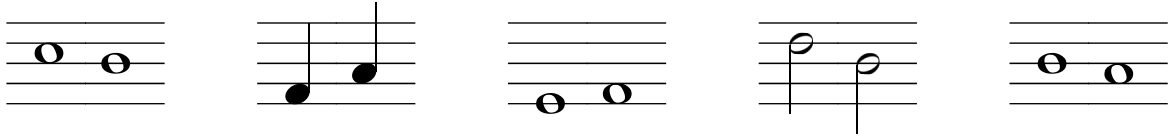


**C G D B**

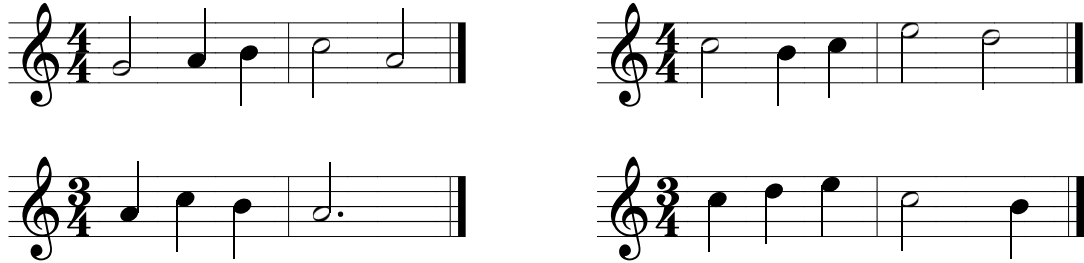
⑤ Draw a **Middle C** on each staff.  
Use whole notes.



- ⑥ Circle each pair of notes which are a **2nd** (step) apart.



- ⑦ Circle the musical examples which contain the following sequence:  
**UP a 3rd, DOWN a 2nd.**



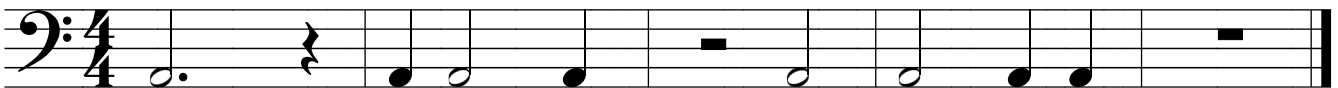
- ⑧ Write exactly enough of each type of note to fill one measure. Check the time signature.

Whole Note  $\frac{4}{4}$  \_\_\_\_\_ ||

Half Note  $\frac{4}{4}$  \_\_\_\_\_ ||

Quarter Note  $\frac{4}{4}$  \_\_\_\_\_ ||

- ⑨ Write the counts of the measure under the notes and rests.



## Ear-Training

- ⑩ Go to **APPENDIX I**, Assignment 6 (p.21) and complete the ear-training assignment.

To access the web applications, go to:

PrimoTheory.com → Spiral Series → Level 2 → Assignment 6

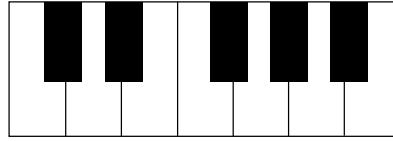
Or scan the QR code with a mobile device to go directly to the assignment page:



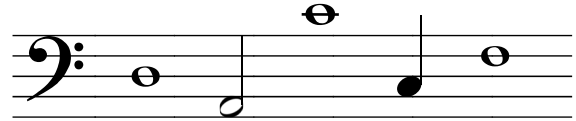
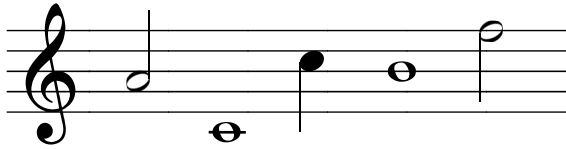
# Assignment 7

① Use the letters given to label the keys.

**F B E A D G**



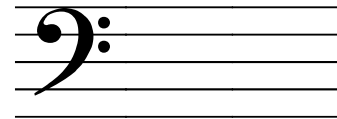
② Name the notes. Circle each **Middle C**.



③ Draw the notes named. Use **half notes**.

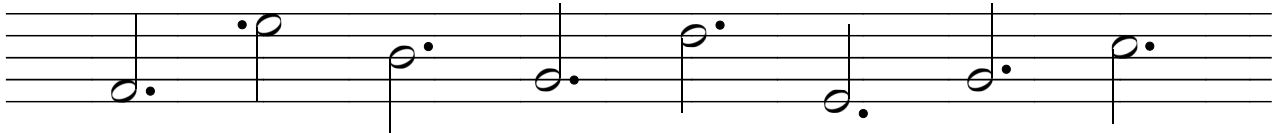


Treble G

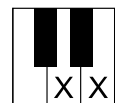
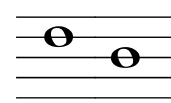
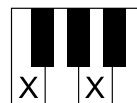
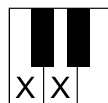
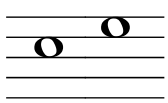


Bass F

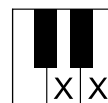
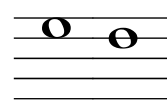
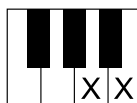
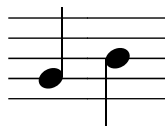
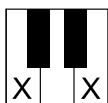
④ Draw an **X** across the **dotted half notes** with incorrect dot placement.



⑤ Circle the pairs of notes or keys which are a **2nd** (step) apart.



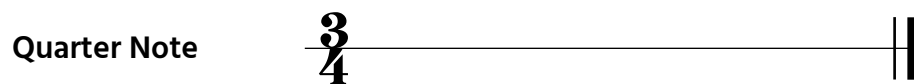
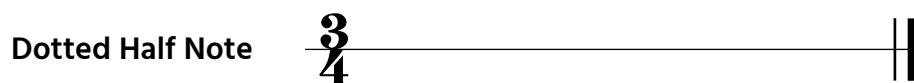
⑥ Circle each pair of notes which are a **3rd** (skip) apart.



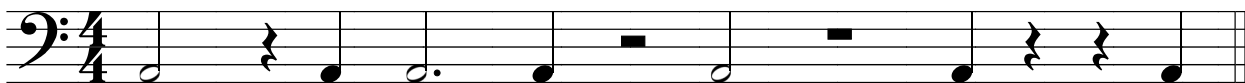
- ⑦ Circle the musical examples which contain the following sequence:  
**UP a 2nd, DOWN a 3rd.**



- ⑧ Write exactly enough of each type of note to fill one measure. Check the time signature.

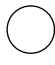



- ⑨ Add bar lines where they are needed. Check the time signature.



- ⑩ Write the counts of each measure under the notes and rests.



- ⑪ Draw a  around the symbol for **Forte**.  
 Draw a  around the symbol for **Piano**.



## Ear-Training

- ⑫ Go to **APPENDIX I**, Assignment 7 (p.21) and complete the ear-training assignment.

To access the web applications, go to:

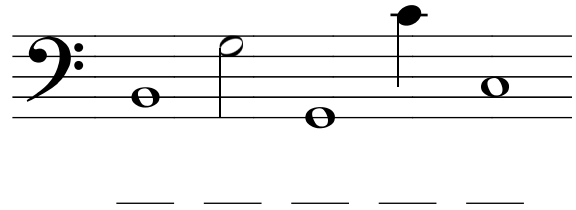
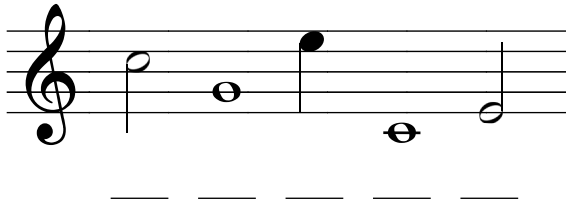
PrimoTheory.com → Spiral Series → Level 2 → Assignment 7

Or scan the QR code with a mobile device to go directly to the assignment page:

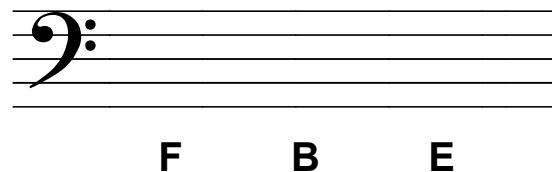
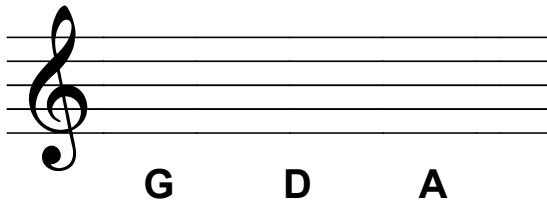


# Assignment 8

① Name the notes. Circle each **Middle C**.



② Draw the notes named. Use **dotted half notes**.



③ Circle the correct symbol for each term.

Time Signature			Bar Line		
Forte			Treble Clef		
Double Bar Line			Flat		
Bass Clef			Piano		
Sharp			Bass Clef		

④ From each half note, draw another half note according to the description. Example:

<b>UP a 3rd</b>	<b>DOWN a 2nd</b>	<b>UP a 2nd</b>	<b>DOWN a 3rd</b>	<b>UP a 3rd</b>



- ⑤ Circle the musical examples which contain the following sequence:  
**DOWN a 2nd, UP a 3rd.**

- ⑥ **Add bar lines** where they are needed. Check the time signature.

- ⑦ Write the counts of each measure under the notes and rests.

- ⑧ Complete the time signatures. Write the top number of each time signature in the box.

4 | G4 . | A4 B4 ||

4 | G4 ♯ | A4 ♯ | B4 - ||

4 | G4 . | ♯ | A4 ||

## Ear-Training

- ⑨ Go to **APPENDIX I**, Assignment 8 (p.22) and complete the ear-training assignment.

To access the web applications, go to:

PrimoTheory.com → Spiral Series → Level 2 → Assignment 8

Or scan the QR code with a mobile device to go directly to the assignment page:



# APPENDIX I

## *Ear-Training Assignments*

The following assignments can be administered by the teacher, or the student can complete these assignments using the web applications provided.

Take the following route to access the menu for these web applications:

PrimoTheory.com → Spiral Series → Level 2



Or scan the QR code with a mobile device to go directly to the menu page:

### Note to Teachers

The answers to the ear-training assignments are accessible only to the purchaser of this book.

Email [info@primotheory.com](mailto:info@primotheory.com) to request the special link or PDF file.

### Assignment 1

① Do the tones move **up** or **down**? Circle the correct answer.

1.	2.	3.	4.	5.
up	up	up	up	up
down	down	down	down	down

② You will hear a series of one-measure rhythms.

Circle **same** if the rhythm you hear is the same as the example shown below.

Circle **different** if the rhythm is different than the rhythms shown below.

1.	2.	3.	4.
			
same	same	same	same
different	different	different	different

## Assignment 2

① Do the tones move **up** or **down**? Circle the correct answer.

- |      |      |      |      |      |
|------|------|------|------|------|
| 1.   | 2.   | 3.   | 4.   | 5.   |
| up   | up   | up   | up   | up   |
| down | down | down | down | down |

② You will hear a series of one-measure rhythms.

Circle **same** if the rhythm you hear is the same as the example shown below.

Circle **different** if the rhythm is different than the rhythms shown below.

1.	2.	3.	4.
			
same	same	same	same
different	different	different	different

## Assignment 3

① Do the tones move **up** or **down**? Circle the correct answer.

- |      |      |      |      |      |
|------|------|------|------|------|
| 1.   | 2.   | 3.   | 4.   | 5.   |
| up   | up   | up   | up   | up   |
| down | down | down | down | down |

② You will hear a series of one-measure rhythms.

Circle **same** if the rhythm you hear is the same as the example shown below.

Circle **different** if the rhythm is different than the rhythms shown below.

1.	2.	3.	4.
			
same	same	same	same
different	different	different	different

## Assignment 4



① Do the tones move **up** or **down**? Circle the correct answer.

- |      |      |      |      |      |
|------|------|------|------|------|
| 1.   | 2.   | 3.   | 4.   | 5.   |
| up   | up   | up   | up   | up   |
| down | down | down | down | down |

② You will hear a series of one-measure rhythms.

Circle **same** if the rhythm you hear is the same as the example shown below.

Circle **different** if the rhythm is different than the rhythms shown below.

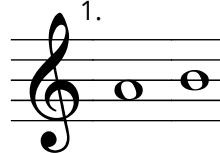
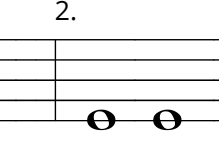
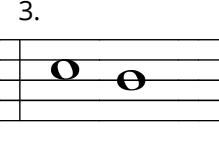
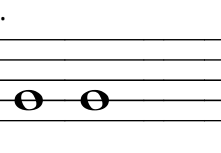
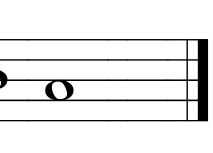
1.	2.	3.	4.
			
same	same	same	same
different	different	different	different

## Assignment 5

① You will hear three tones for each example.

Two of the notes are given. **Write the missing note.**

The note you are to write will step up, step down, or repeat the second note given.

1.	2.	3.	4.	5.
				

② You will hear a series of one-measure rhythms.

Circle **same** if the rhythm you hear is the same as the example shown below.

Circle **different** if the rhythm is different than the rhythms shown below.

1.	2.	3.	4.
			
same	same	same	same
different	different	different	different

## Assignment 6

- ① You will hear three tones for each example.  
Two of the notes are given. **Write the missing note.**  
The missing note will step up, step down, or repeat the second note given.

- ② You will hear a series of one-measure rhythms.  
Circle **same** if the rhythm you hear is the same as the example shown below.  
Circle **different** if the rhythm is different than the rhythms shown below.

1.	2.	3.	4.
same	same	same	same
different	different	different	different

## Assignment 7

- ① You will hear three tones for each example.  
Two of the notes are given. **Write the missing note.**  
The missing note will step up, step down, or repeat the second note given.

- ② You will hear a series of one-measure rhythms.  
Circle **same** if the rhythm you hear is the same as the example shown below.  
Circle **different** if the rhythm is different than the rhythms shown below.

1.	2.	3.	4.
same	same	same	same
different	different	different	different

## Assignment 8

- ① You will hear three tones for each example.  
Two of the notes are given. **Write the missing note.**  
The missing note will step up, step down, or repeat the second note given.

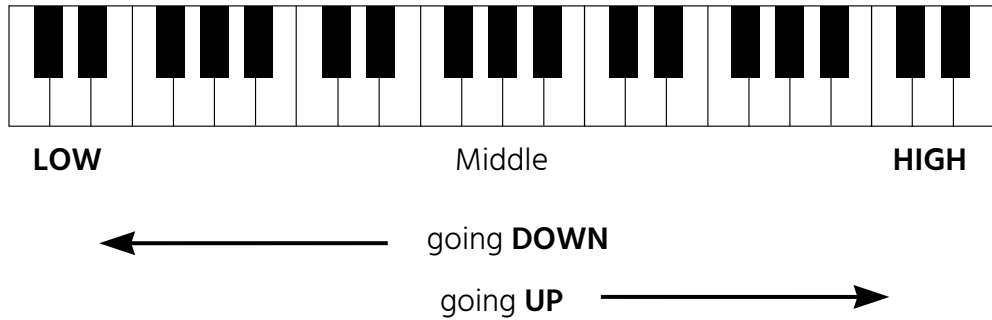
- ② You will hear a series of one-measure rhythms.  
Circle **same** if the rhythm you hear is the same as the example shown below.  
Circle **different** if the rhythm is different than the rhythms shown below.

1.	2.	3.	4.
same	same	same	same
different	different	different	different

# APPENDIX II

## *Study Materials*

### High and Low Sounds

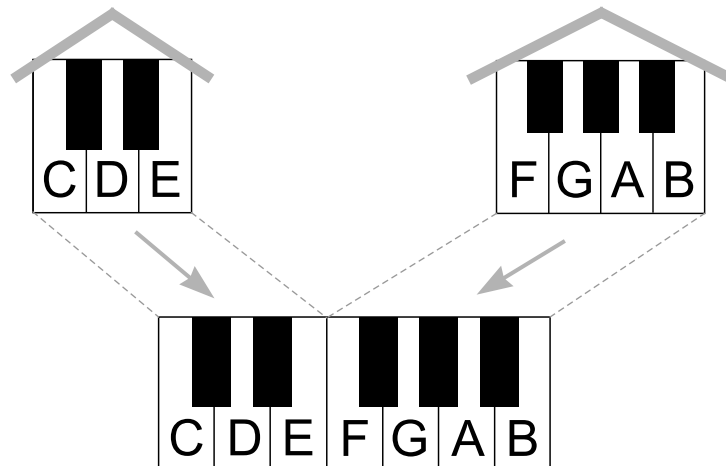


The 7 letters of the **music alphabet**

**A B C D E F G**

Think of the C D E group as a small house.

Think of the F G A B group as a big house.



The music alphabet **given twice.**

**STEPS** are also called **2nds**

**Stepping UP** on the Staff

line to space



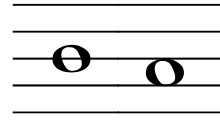
or

space to line



**Stepping DOWN** on the Staff

line to space

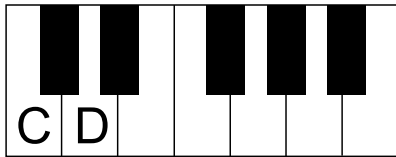


or

space to line

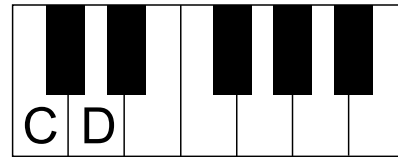


**Stepping UP** on the Keyboard



Next key to the **RIGHT**.

**Stepping DOWN** on the Keyboard



Next key to the **LEFT**.

**SKIPS** are also called **3rds**

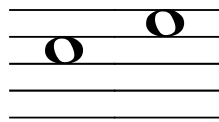
**Skipping UP** on the Staff

line to line



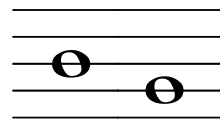
or

space to space



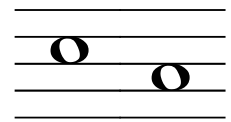
**Skipping DOWN** on the Staff

line to line

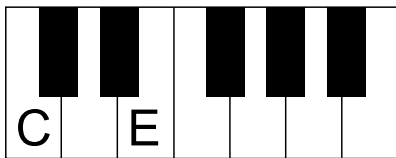


or

space to space

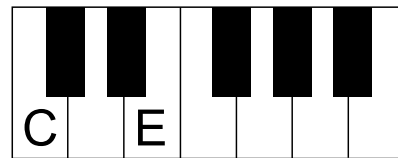


**Stepping UP** on the Keyboard



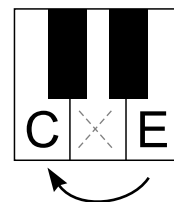
Two steps to the **RIGHT**.

**Stepping DOWN** on the Keyboard



Two steps to the **LEFT**.

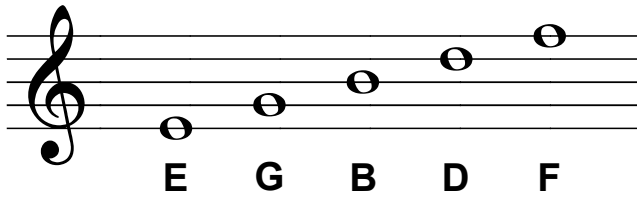
There is one white key between two keys that are skipping.  
The skipped key is marked with an "X".



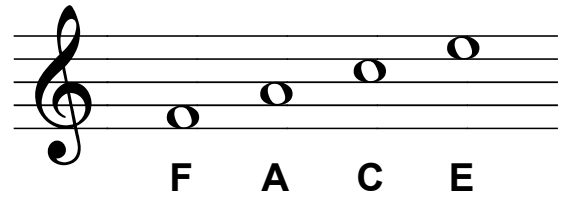


## Treble Clef

LINE notes

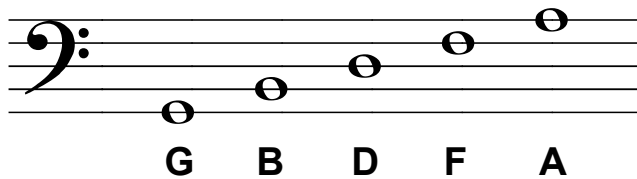


SPACE notes

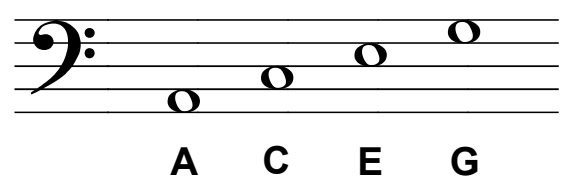


## Bass Clef

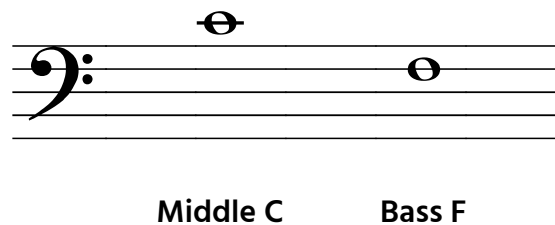
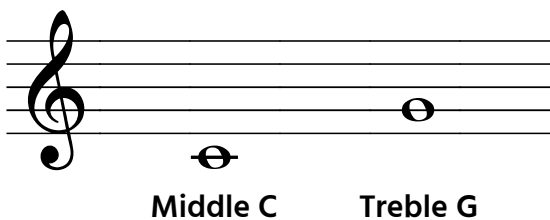
LINE notes



SPACE notes



These notes are important benchmarks for the treble and bass staff.

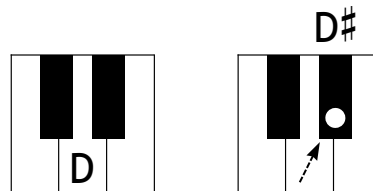


## ACCIDENTALS

Sharp signs and flat signs are called accidentals.

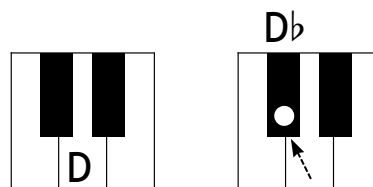
**Sharp Sign**  $\sharp$  A sharp sign before a note **raises** the pitch **one half step**.

On the keyboard, a sharped note is played on the very next key to the RIGHT.



**Flat Sign**  $\flat$  A flat sign before a note **lowers** the pitch **one half step**.

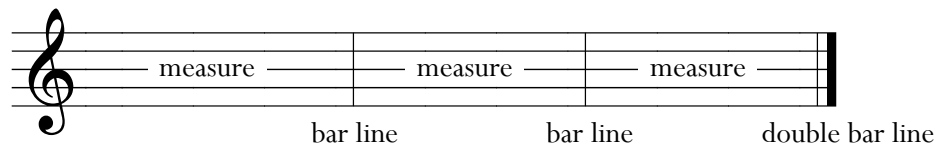
On the keyboard, a flatted note is played on the very next key to the LEFT.



## RHYTHM

**Bar lines** are used to separate **measures**.

A **double bar line** is used to mark the end of a piece or section.



A **time signature** is placed at the beginning of a piece of music, to the right of the clef sign.



**4**  
**4**

The top number shows how many beats in each measure.




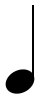



The bottom number shows the note value that gets one beat.

Example:



There are four beats per measure.

The quarter note (♩) gets one beat.

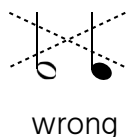
<p><b>Whole Note</b></p>  <p>4 beats</p>	<p><b>Dotted Half Note</b></p>  <p>3 beats</p>	<p><b>Half Note</b></p>  <p>2 beats</p>	<p><b>Quarter Note</b></p>  <p>1 beat</p>
<p><b>Whole Rest</b></p>  <p>4 beats</p>		<p><b>Half Rest</b></p>  <p>2 beats</p>	<p><b>Quarter Rest</b></p>  <p>1 beat</p>

## APPENDIX III

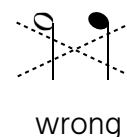
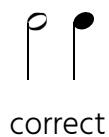
### *Drawing Notes*

#### Stem Placement

When the stem goes up, it is placed on the right side of the note head.

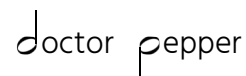


When the stem goes down, it is placed on the left side of the note head.



Memory Aid:

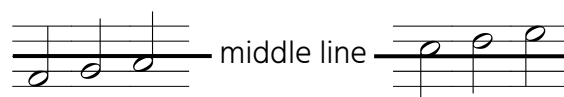
Replace the lowercase "d" and "p" in "doctor pepper" with a half notes:



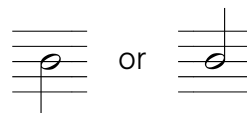
#### Stem Direction

Notes below the middle line have up stems.

Notes above the middle line have down stems.



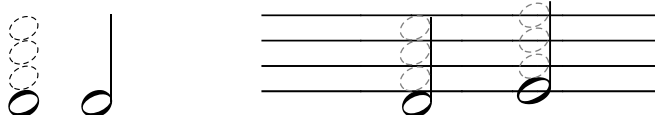
Stems of notes on the 3rd line can go up or down.



#### Stem Length

The stem should extend three more lines or spaces from the note head.

The length of the stem should equal the length of three more (invisible) noteheads:

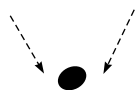


#### Checklist for Drawing Stems:

Does the stem go  
**UP** or **DOWN**?



Is the stem on the  
**LEFT** or **RIGHT**?

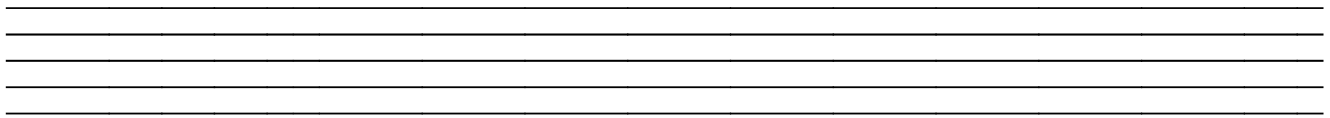
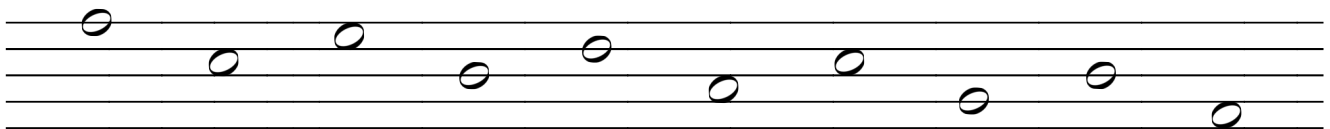
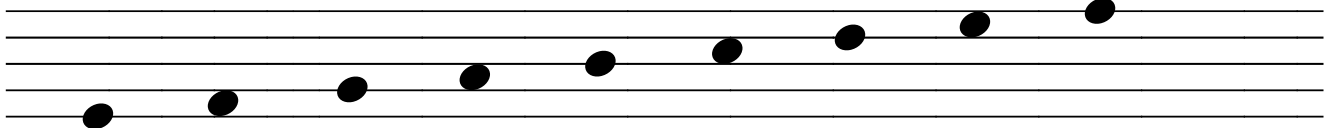


**HOW LONG** is the stem?

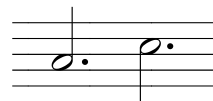


**PRACTICE**

Add stems to the following note heads.

**Dotted Half Notes**

For dotted space notes, place the dot on the same space as the note, and always to the right of the note head.



For line notes, place the dot on the next space higher than the note, regardless of stem direction.

